



SPRING 2021



LED LANDSCAPE LIGHTING



Hardscape Light with Replaceable LED Bar

Our new professional grade low voltage LED hardscape step and wall lights are constructed of a powder coated aluminum bracket with an easy replaceable LED light bar.

Highlight steps, walls, and outdoor kitchens.



ITEMS INCLUDED:

- Silicone Wire Nuts
- Lead Wire: 36"

LIGHTING SPECIFICATIONS:

- Construction: Powder Coated Aluminum
- Finishes: Black or Bronze
- Light Source: Integrated LED's
- Color Temp (CCT): 2700K
- Voltage Range: 9V – 15V AC/DC
- Power Supply: 12V Low Voltage Transformer (Sold Separately)

HARDSCAPE LIGHTS



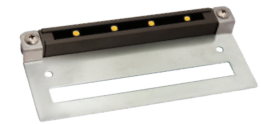
TS-A6000 REPLACEABLE LED MODULE

Dimensions: 7-1/8"(L) x 3"(W) x 7/8"(H)

Watts: 1W

Lumens: 75

CRI: >80



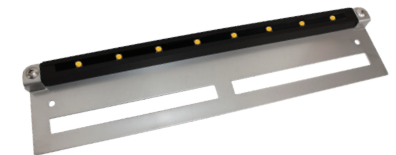
TS-A1000*

Dimensions: 7"(L) x 3"(W) x 5/8"(H)

Light Count: 4

Watts: 1.4W

Lumens: 78



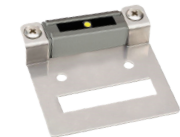
TS-A2000*

Dimensions: 13"(L) x 3"(W) x 5/8"(H)

Light Count: 8

Watts: 2.5W

Lumens: 130



TS-A500*

Dimensions: 3.5"(L) x 3"(W) x 5/8"(H)

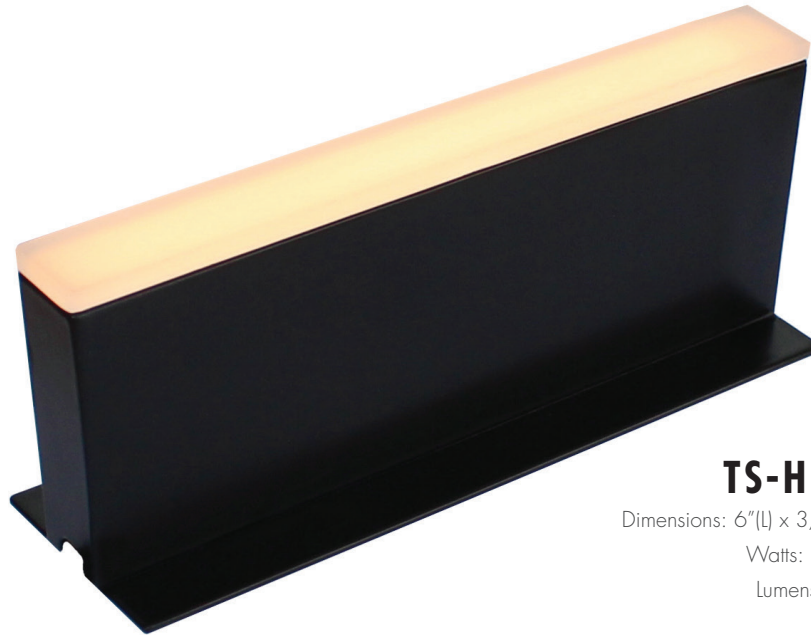
Light Count: 1

Watts: 0.2W

Lumens: 24

*Limited availability in select markets.
Available in Black/Bronze/Gray.

PAVER LIGHTS



TS-HPL-6

Dimensions: 6"(L) x 3/4"(W) x 2-3/8"(H)

Watts: 1.5W

Lumens: 35



TS-HPL-8

Dimensions: 8"(L) x 3/4"(W) x 2-3/8"(H)

Watts: 1.8W

Lumens: 45



TS-HPL-9

Dimensions: 9"(L) x 3/4"(W) x 2-3/8"(H)

Watts: 2.5W

Lumens: 60

Patent Pending

Illuminate your Hardscape Borders with Easy to Install Paver Lights

The paver lights are available in 6", 8"
& 9" lengths designed to fit along sailor
or soldier course borders of patios,
walkways, and driveways.



ITEMS INCLUDED:

- Silicone Wire Nuts
- Lead Wire: 36"

LIGHTING SPECIFICATIONS:

- Construction: Powder Coated Aluminum with Frosted Acrylic Lens
- Finish: Black
- Light Source: Integrated LED's
- Color Temp: (CCT) 2700K
- Voltage Range: 10V – 15V AC/DC
- Power Supply: 12V Low Voltage Transformer (Sold Separately)

PILLAR LIGHTS



TRADITIONAL PILLAR LIGHT
TS-PL100

Dimensions: 9"(L) x 9"(W) x 20"(H)
Watts: 3W (G4 LED Lamp)
Lumens: 300



MODERN PILLAR LIGHT
TS-PL101

Dimensions: 9"(L) x 9"(W) x 18"(H)
Watts: 3W (G4 LED Lamp)
Lumens: 300



NOBLE PILLAR LIGHT
TS-PL102

Dimensions: 11"(L) x 11"(W) x 19-7/8"(H)
Watts: 6W (Replaceable Bluetooth RGBCW LED)
Lumens: 250 at 2700K

More for Your Hardscape

Utilize a Tru-Scapes low voltage pillar light with an antique brushed bronze finish and frosted heat resistant glass to beautify natural stone or concrete pillars. This fixture will add a soft inviting glow to any outdoor living space.

ITEMS INCLUDED:

- Silicone Wire Nuts
- LED Light Source
- Lead Wire: 36"
- Mounting Base
- Masonry Drill Bit and Template
- Anchor Kit

LIGHTING SPECIFICATIONS:

- Construction: Powder Coated Aluminum & Frosted Tempered Glass
- Finish: Antique Brushed Bronze
- Power Supply: 12V Low Voltage Transformer (Sold Separately)

TS-PL100 & TS-PL101:

- Color Temp (CCT): 2700K
- Voltage Range: 9V – 15V AC/DC
- Mounting Plate: 5.5" x 5.5"

TS-PL102:

- Color Temp (CCT): 2200K – 6500K
- Voltage Range: 10V – 15V AC/DC
- Mounting Plate: 10.25" x 10.25"



ACCENT LIGHTS

— AVAILABLE IN BLACK OR BRONZE —



**TRADITIONAL
ACCENT LIGHT
TS-B102**

Light Beam: 40°
Watts: 4W (MR16)
Lumens: 250



**WALL WASH LIGHT
TS-B105**

Light Beam: 60°
Watts: 5.5W (MR16)
Lumens: 450



**HIGH POWER
ACCENT LIGHT
TS-B106**

Light Beam: 120°
Watts: 8W (PAR36)
Lumens: 900

Heavy-duty Accent Lights

Our professional grade low voltage LED landscape accent lights are constructed of heavy-duty die-cast brass with a durable finish. Accent lights are commonly used to highlight trees, shrubs, walls or other focal points in the landscape. The accent lights feature a tool-less knob to adjust fixture angle.

ITEMS INCLUDED:

- Silicone Wire Nuts
- LED Lamp
- Lead Wire: 36"
- Heavy-duty 8" Ground Stake

LIGHTING SPECIFICATIONS:

- Construction: Solid Brass
- Finishes: Black or Bronze
- Color Temp (CCT): 2700K
- Voltage Range: 9V – 15V AC/DC
- Power Supply: 12V Low Voltage Transformer (Sold Separately)

WELL LIGHTS

— AVAILABLE IN BLACK OR BRONZE —



HIGH POWER IN-GROUND WELL LIGHT

TS-B201

Light Beam: 120°
Watts: 8W (PAR36)
Size: 5.5"(Dia.) x 9.625"(H)
Lumens: 900



IN-GROUND WELL LIGHT

TS-B203

Light Beam: 60°
Watts: 4W (MR16)
Size: 4"(Dia.) x 6.875"(H)
Lumens: 250

Showcase Your Property with In-ground Lighting

These low voltage LED landscape well lights are heavy-duty complete with lamp. The watertight composite in-ground housing reveals a brass lid above the surface. Use to highlight focal points such as plants, walls, statues or structures.



ITEMS INCLUDED:

- Silicone Wire Nuts
- LED Lamp
- Lead Wire: 36"

LIGHTING SPECIFICATIONS:

- Construction: Brass & Composite
- Finish: Black or Bronze
- Color Temp (CCT): 2700K
- Voltage Range: 9V – 15V AC/DC
- Power Supply/Voltage: 12V Low Voltage Transformer (Sold Separately)

PATH LIGHTS

— AVAILABLE IN BLACK OR BRONZE —



TRADITIONAL
PATH LIGHT
TS-B301

Overall Height: 22-1/4"
Lumens: 300



CLASSIC
PATH LIGHT
TS-B302

Overall Height: 23-1/4"
Lumens: 300



LANTERN
PATH LIGHT
TS-B304

Overall Height: 24"
Lumens: 300



MODERN
PATH LIGHT
TS-B306

Overall Height: 21-1/4"
Lumens: 300

Elegant & Stylish Path Lights

Our professional grade LED landscape path lights are a solid heavy-duty brass fixture used to highlight walkways, pathways and themed areas. Our path lights feature a stylish designed head with a 360 degree LED lamp for optimum light output and include a heavy-duty ground stake.

ITEMS INCLUDED:

- Silicone Wire Nuts
- G4 LED Lamp
- Lead Wire: 36"
- Heavy-duty 8" Ground Stake

LIGHTING SPECIFICATIONS:

- Construction: Solid Brass
- Finishes: Black or Bronze
- Light Source: G4 LED Lamp
- Light Beam: 360°
- Watts: 3W

- Color Temp (CCT): 2700K
- Voltage Range: 9V – 15V AC/DC
- Power Supply: 12V Low Voltage Transformer (Sold Separately)



Smart Landscape Lighting Control

Smart Bluetooth wireless landscape lighting transformer with a dashboard to check status and manually control the lights. Power meter feature displays the watts used, available, and percent of full capacity. Multiple low-voltage 14V AC output terminals for use with LED lighting. Astronomical and time-of-day based programs.

SPECIFICATIONS:

- Dimensions: 5.3"(W) x 10.9"(H) x 5.3"(D)
- Efficiency Certified: DOE & CEC
- UL/cUL 1838 listed and FCC Part 15 Class B
- Exterior: Anodized Aluminum
- IP Rating: IP 21
- Input Voltage Rating: 120V AC
- Output Voltage Rating: 14V AC

150 WATT MODEL:

- Max Output Current: 12.5 A
- Output Terminals: 2

300 WATT MODEL:

- Max Output Current: 20.5 A
- Output Terminals: 3

SMART WIRELESS CONTROL OPTIONS



TS-TAAB-150

Max Output Power: 150 W

TS-TAAB-300

Max Output Power: 300 W



ACCESSORIES



150W: TS-TSSP-150
300W: TS-TSSP-300

150W & 300W SS Transformer

Max Input: 120VAC, 50/60Hz
Output Voltage: 12V AC
Heavy-duty 304 Stainless Steel



TS-TBPT-100

100W Economy Transformer

Simple Photocell Control



TS-T100-W

WiFi Plug

WiFi plug provides timer and remote access to our 150W & 300W Stainless Steel transformers.



TS-122G250-EZ

Direct Burial Low Voltage Wire

250ft Spool of 12/2 CCA Direct Burial Wire in an EZ-Pull Box.

Check out our website at www.tru-scapes.com for additional accessories.

LED LAMPS



Hardscape LED Module

TS-A6000-RBULB
Fits TS-A6000

Power: 1W LED
CCT: 2700K
Lumens: 75



G4 Lamp

TS-360G4-1

Power: 3W LED
CCT: 2700K
Beam: 360°
Lumens: 300



MR16 Lamps

4W: TS-40MR16
5.5W: TS-60MR16

Power: 4W OR 5.5W LED
CCT: 2700K
Beam: 4W - 40° – Lumens: 250
Beam: 5.5W - 60° – Lumens: 450



PAR36 Lamp

TS-120PAR36

Power: 8W LED
CCT: 2700K
Beam: 120°
Lumens: 900

LIMITED WARRANTIES

Tru-Scapes® Landscape Lighting warrants that its products will be free from defects in workmanship and materials for five (5) years to the original purchaser. Warranty coverage requires receipt of purchase. Exceptions to our warranty as follows:

- Tru-Scapes Light fixtures warranty is only valid when using a Tru-Scapes transformer.
- Light fixtures are warranted to original purchaser for 5 years from date of purchase; Light sockets and fixture housing on all fixtures are warranted for life to the original purchaser.
- All Tru-Scapes Transformers are under warranty for 5 years from original date of purchase to the original purchaser. Warranty does not cover unusual acts of nature such as lightening strikes and power surges.
- Tru-Scapes LED Bulbs are warranted for five (5) years or 30,000 hours, whichever comes first to the original purchaser.
- Exterior black powder coat finishes are warranted for 5 years for chipping and flaking to the original purchaser.
- Natural patina on all brass fixtures is natural and normally occurring and not covered under any warranty. Cleaning of fixtures using a soft cloth towel with a cleaner is recommended to restore the finish.
- Tru-Scapes® warranties do not cover plants that die or burn because of continuous light shined on them. Certain acid-loving plants such as arborvitae, pine trees, and others should not be exposed to light of any kind for more than 18 hours a day as these plants need time to sleep and allow photosynthesis to naturally occur.

Contact your dealer for more information.



TRU-SCAPES®

LANDSCAPE LIGHTING

Tru-Scapes Landscape Lighting, Southeastern PA

contacts@tru-scapes.com | www.tru-scapes.com | www.belgard.com/lighting

